



*Present*

# **Featured Racks**

**We are going to present to you our standard 19”  
Rack system, Server Racks, Cabling Racks, PA  
Racks, Customized Racks and their accessories**

# Industrial PC Rack

This rack is used to house Industrial PCs.

Feature :

- Front Glass Door
- Removable Side Panels with locks
- Heavy Duty Castor Wheels with screw feet.
- Vertical Cable Management, 4 nos
- Vertical Power Distribution, 10 way



# PA System Rack

This rack is used to house PA system, Amplifiers and control equipments to deliver Public Address function.

Feature :

- Front Glass Door
- Removable Side Panels with locks
- Heavy Duty Castor Wheels with screw feet.
- Vertical Power Distribution, 12 way x 2





# PC Enclosure

This type of rack is used to house a PC in a manufacturing environment.

Feature :

- Front Upper Glass Door
- Keyboard Drawer
- Front Lower Steel Door
- Removable Side Panels
- Heavy Duty Castor Wheels with screw feet.
- Vertical Power Distribution, 8 way



# Tower Server Rack

This type of rack is used to house Tower Servers regardless of the shape and size of servers.

Feature :

- Front Upper Glass Door
- Hinged Keyboard Support
- Front Lower Steel Door
- Removable Side Panels
- Heavy Duty Castor Wheels with screw feet.
- Vertical Power Distribution, 8 way

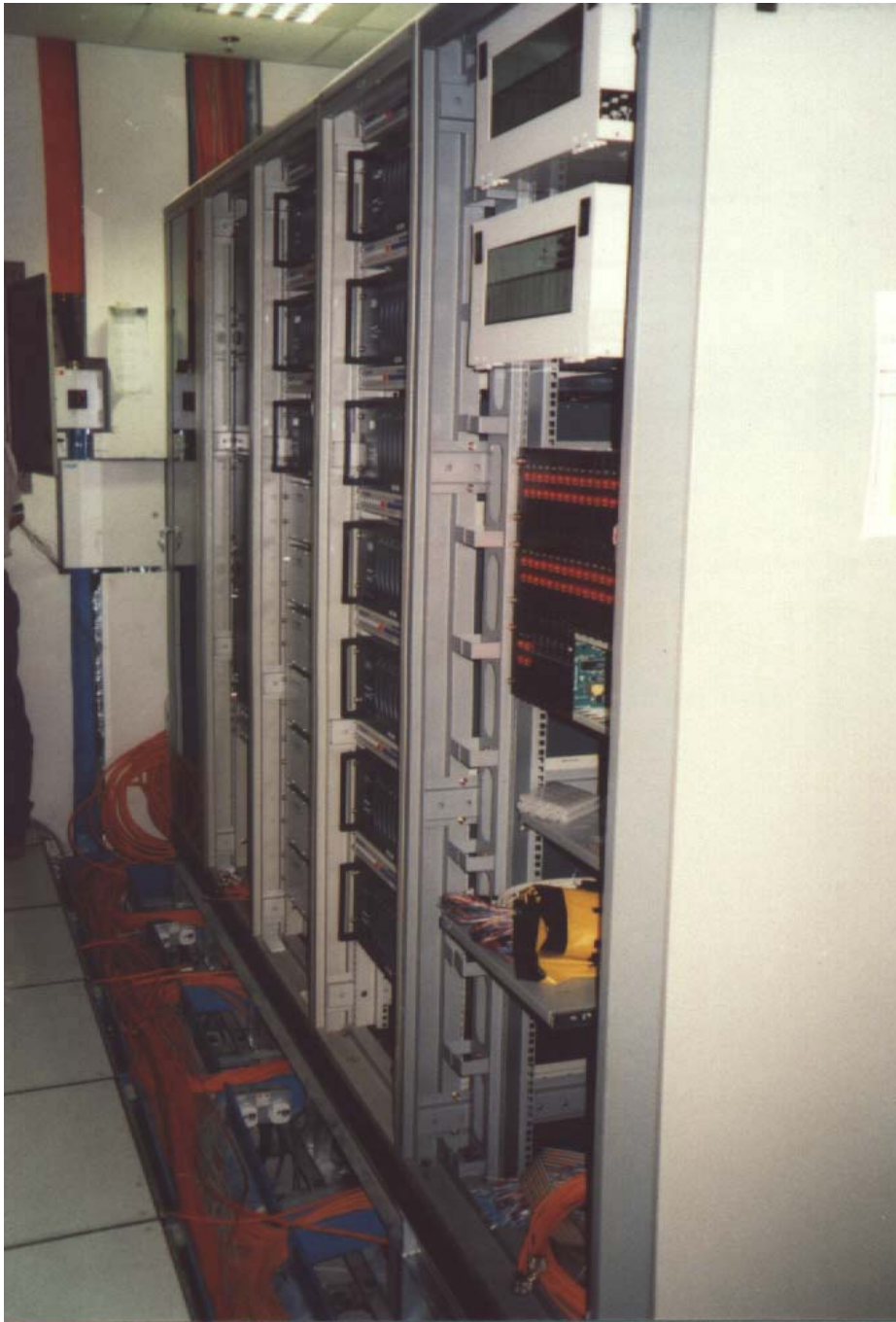


# Cabling Rack

This is a typical Cabling Rack.

Feature :

- Double Leaf Door, Perspex for the front and Steel perforated for the rear.
- Removable Side Panels with locks
- Castor wheels with Screw feet
- Vertical Cable Management, 4 nos
- Vertical Power Distribution, 12 way x 2



# CD Shelter Rack

This is a CD Shelter Rack Suite

Feature :

- Removable Side Panels with locks
- Plinth with Shock Absorber (PE approval needed)
- Vertical Cable Management, 4 nos
- Vertical Power Distribution, 12 way x 2



# Customized Rack

This rack is 42U, 700W x 950D mm.

It is a combination of Server & Cabling Racks. Internally, there is vertical cable management at the sides and Server mounting facilities.

This rack is used in a Bank Data Center.

It feature a Front and Rear Perforated door for optimum ventilation.

# Broadcast Control Center



# Rack Mounted KVM Console



A 1.5U KVM Console mounted on a 27U Server Rack.

# Fan Plate Module

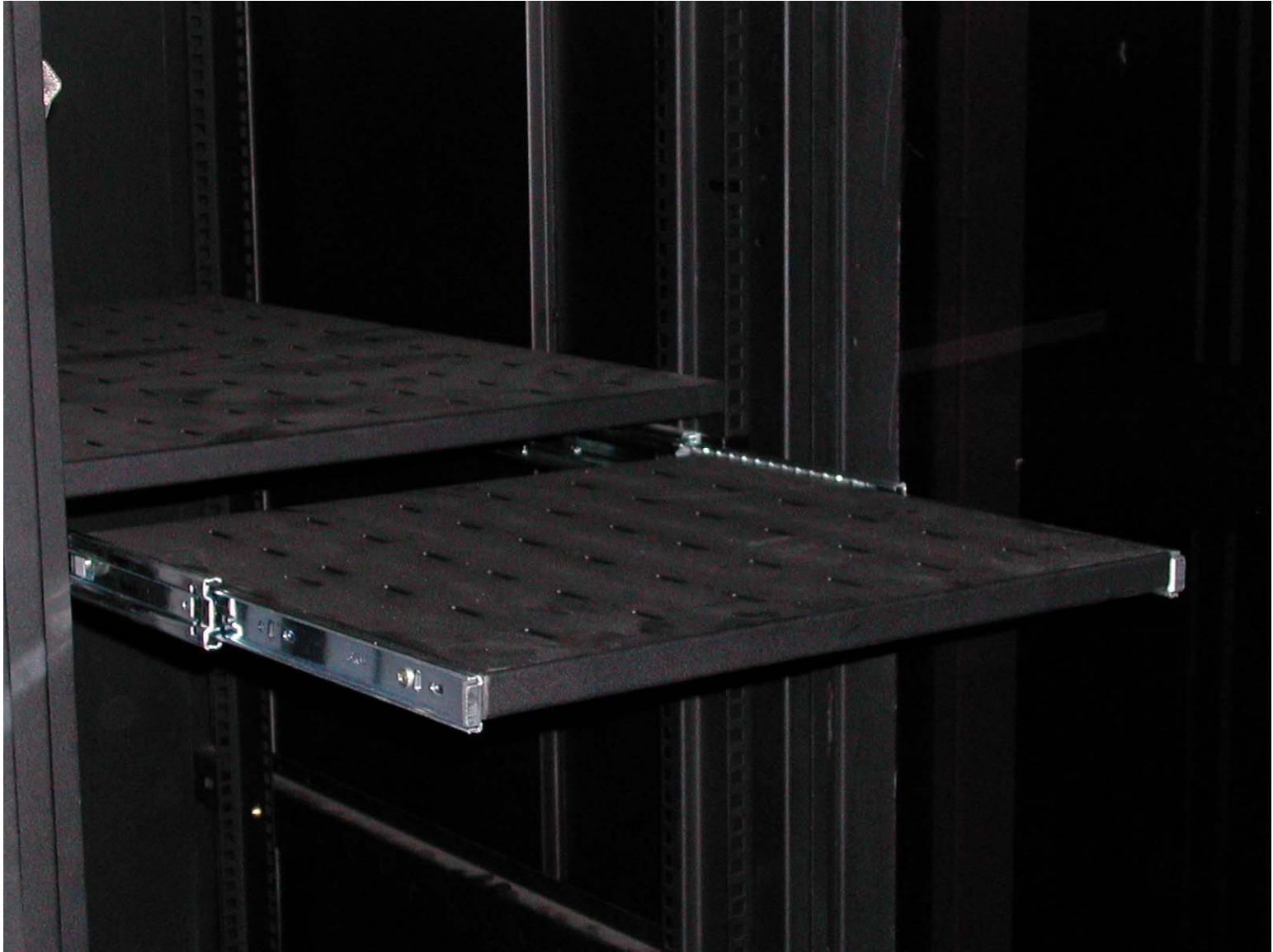


# Cable Management Accessories



Cable Management Panel, 2U, Horizontal  
Perforated Panel, 1U

# Sliding Tray



Sliding Tray mounted on a Server Rack.

# Rack Mounted Power Socket



Power Distribution can be mounted horizontally on the rack.

Standard : BS 1383

Specification : 230 VAC

# Vertical Power Socket

Power Distribution is designed to be embedded into the Main Frame of the rack.

Standard : BS 1383

Specification : 230 VAC



# Vertical Power Socket, with MCB

Miniature Circuit Breaker can be incorporated together with the Vertical power distribution.

Specification : 230 VAC, Single Phase





*Your solution to*

*19" Rack System*