

PC Enclosure Series -----



PC Enclosure series of racks are mainly used in the Manufacturing and Process Control environment. Equipments housed inside the rack are protected from the environment as well as unauthorized user. It enables different levels of users to access control of the machinery by having separate compartments to store different equipment.

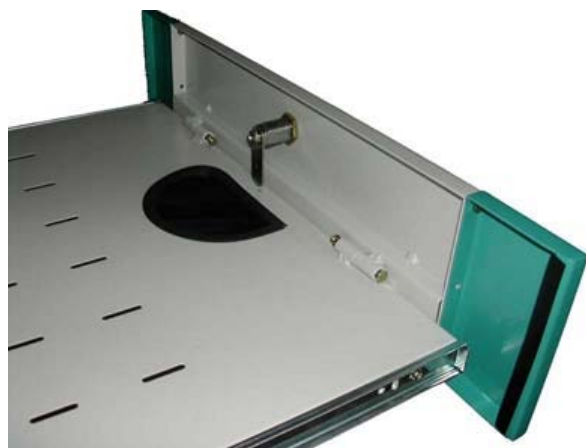
Typically, the top portion of the rack contain the monitor. Center portion house the keyboard and mouse for set-up of the computer. The lower portion is a multi-purpose compartment which usually house the CPU, printer or UPS.

Exhaust fans installed at the sides of the rack enable the electronic equipments to be cooled and at the same time prevent water droplets or condensation from getting into the enclosure.

Parts Feature

Keyboard Drawer

The keyboard compartment house a mini keyboard and mouse. The front panel is lockable to keep unauthorized user away. Foldable front panel can double as a wrist rest.

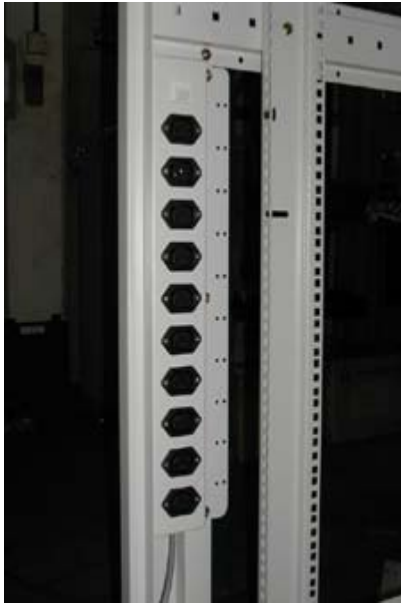


Power Distribution - BS1383 Standard

Rack mounted power distribution socket is one of the option for the power distribution within the PC enclosure.

Position the power distribution according to design and needs.

Picture shows the BS1383 Standard Power Socket.



<= Power Distribution - IEC Standard

Vertical embedded IEC power socket is another option for the power distribution within the PC enclosure.

Picture shows the IEC Standard Power Socket



<= Power Cable - IEC Standard

Length : 1.5m
Size : 0.75 sq mm