



*Kwike Console*

# The Innovative Control Enclosure System



# Parts Identification

Type 8 Bezel

Type 5 Bezel

Type 2 Bezel

Type 2 Main Frame

Table Top Module

Keyboard Drawer

Front Lower Panel, Curved

Front Lower Door

# Parts Identification

Main Frame  
Type 8

Rear Panel  
Type 8

Main Frame  
Type 7

Rear Panel  
Type 7

Fan Plate

Rear Panel  
Type 2

Rear Frame  
Type 2

Side Cover  
Type 2

Plinth



# Feature of Kwiki Console

The *Kwiki Console* is designed for *Quick* and easy deployment of the console at site. The components that made up the console are snap-on to the main frame and fasten by bolts and nuts.

Modular design in component form enable the console to be flat packed in Semi Knock Down (SKD) kit for oversea shipment. Space saving feature makes the console versatile and saves shipment or storage cost.

## Feature & Accessories



### Sleek Design

Slim designed console deployed in a control center creates a friendly and cozy environment to the operators.

LCD monitors are widely used in modern control room and will eliminate huge and bulky console which requires large area or floor space to house.

CPU and equipment are mounted at the lower compartment of the *Kwiki Console*.

For maintenance purpose, equipment are accessed by removing the rear panel or front lower cover.



### Snap-on Bezel Monitor

High quality workmanship and screwless design makes the console look aesthetically outstanding .

Snap-on bezel enables quick and easy installation and maintenance of the LCD monitors.

IP55 bezels protect the monitors from dust and water.



### Ventilation Fan

Thermal management within the console is controlled by industrial ventilation fans.

The fans are mounted right behind the LCD monitor to extract heat generated out of the console.

Mounting of the fans are inclined at an angle to prevent water condensation from the ceiling and dust collection.



# Feature of Kwiki Console

# Feature



## Ergonomic Keyboard Drawer

Ergonomically designed keyboard drawer reduces fatigue and stress on the wrist of operators.

Mounted on ball bearing telescopic slides to ensure smooth and fuss free operation.

Keyboard can be stowed away to clear table space, eliminate dust accumulation and forestall any drink spillage.



## Embedded Keyboard and Touchpad Mouse

To enhance the presentation of the *Kwiki Console*, the keyboard and touch pad mouse is embedded into the drawer under the table top.

Made of steel and powder coated, the keyboard and mouse warrant durable and long lasting use.



## Front Lower Door

Front lower door are designed to cover up equipments that are mounted below the table top.

Front Lower Door offers security with a cam lock.

Protruding upper portion allows deeper equipments mounting.



## Front Lift-off Panel

Front Lift-off Panel are designed to cover up equipments that are mounted below the table top.

Front Lift-off cover offer aesthetic curved design with no visible screws, lock or hinges.



## Flip-up Fan Plate

Flip-up fan plate allow access to the rear of LCD and fan maintenance.

Fan can be cleaned from the inside or replaced easily.



# Accessories for Kwik Console



PDU-IEC-34MS



PDU-MS8M



PDU-MS4M



## Power Distribution Unit, PDU

- Part No : PDU-IEC-34MS (IEC320 type socket)
- Part No : PDU-MS-8M (Multi-socket 8-way type)
- Part No : PDU-MS4M (Multi-socket 4-way type)
- Part No : PDU-COM44M (Combo, IEC & Multi-socket)

PDU's come in rack mountable version and 2 types of mounting, vertical or horizontal.

Standard equipment will be able to use the IEC320 for high density and low power distribution. For non standard plugs, multi-socket will come very useful as no modification to the plug is needed.

Push button MCB is a standard option in the 1U PDU. Detachable input power cord supplied in 3 meter length comes with moulded BS1363 type 3-pin plug withstand breakage and enhance safety.

## Embedded DVD/CDROM & USB hub

DVD/CDROM located at the front panel provide easy duplication of information.

USB hub gives user an option to transfer application or connect peripherals, example scanner, printer

## Process Control in Oil Refinery



# Industrial LCD & Panel PC



## Panel Mounted LCD monitor

Industrial grade LCD monitor will prevent dust or water away in harsh industrial environment.

Metal cladding with a protective glass over LCD will protect the monitor from dirty fingers or harmful chemicals.

Various types of touch screen option available.



## Touch screen LCD monitor

Industrial grade touch screen LCD used for industrial control and Automation.

High resolution LCD monitor with up to IP65 rating.

Input volt : 12VDC



## Panel Mounted PC

Industrial grade Panel PC with touch screen compliments well with the [Kwike Console](#).

15" to 21" LCD available for different applications.



Industrial LCD & Panel PC



# Kwike Console – Type 1, 1200W

Typical Layout



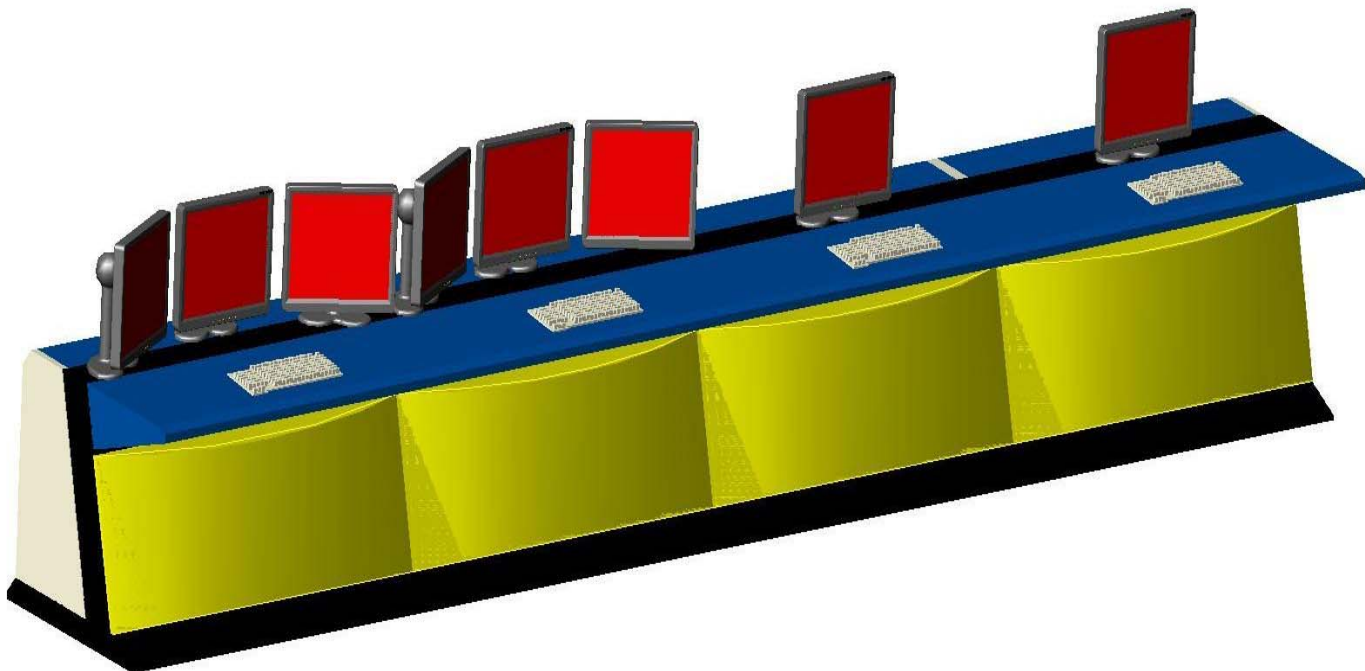
## ***Kwike Console Type 1, 1200W***

Housing 3 sets of workstation in a single 1,200mm width module saves space and installation time. Equip with 8-way multi-socket PDU, with MCB, this console is Plug & Play.

***Kwike console*** is designed to reduce fatigue of the operators working long hours at the console.

Ergonomic table edges give the operators a feel comfortable working environment.

## Typical Layout for Security Pass Control Room



This typical layout in the Security Pass Control Room is designed for 2 operators and 2 supervisors operation.

Ample space is allocated for all 4 personnel to work comfortably so as to create a friendly and cozy work environment to help operator de-stress even working under pressure.





# Airport CCTV Control Center

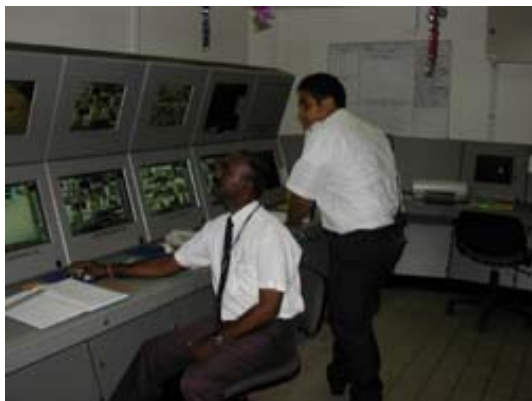


Housing 55 pieces of LCD monitor and equipment inside the Kwik console, this is a typical application in a CCTV control center.

## Facility Management Control Room



## FCC Room



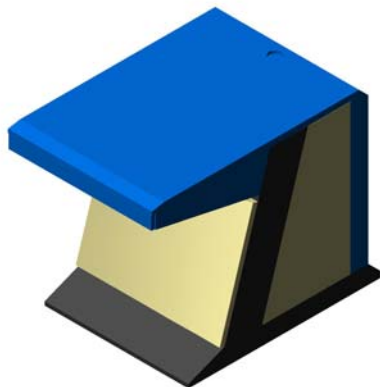
Typical Application



# Presentation Style of Kwiki Console

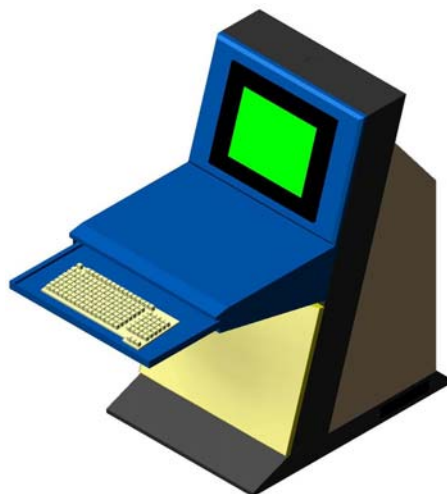
The *Kwiki Console* is designed for *Quick* and easy deployment of the console at site. The components that made up the console are snap-on to the main frame and fasten by bolts and nuts.

Modular design in component form enable the console to be flat packed in Semi Knock Down (SKD) kit for oversea shipment. Space saving feature makes the console versatile and saves shipment or storage cost.



## Type 1 Building Automation System Process Control Console

- Mount full range of desktop LCD monitors
- Removable lower panel
- Accommodate Tower CPU



## Type 2 Facility Management Console Process Control Console

- Mount full range of LCD monitors
- Removable lower panel
- Optimize Floor space



## Type 5 CCTV Monitoring Console Facility Management Console Process Control Console

- Mount full range of LCD monitors
- Removable lower panel
- Cable entry from raised floor



# Presentation Style of Kwiki Console

To further save space, a three tier console, Type 8 is used to house up to 3 monitors in a single work bay. Plasma or video wall can be mounted on upper tier of the Type 7 console for Mimic Panel application.

## **Type 7** CCTV Monitoring Console Facility Management Console Baggage Handling Console Process Control Console

- Mount full range of LCD monitors
- Allocate for 2 monitors
- Mimic Panel mounting
- Removable lower panel
- Cable entry from raised floor
- Modular table top



## **Type 8** CCTV Monitoring Console Facility Management Console Process Control Console

- Mount full range of LCD monitors
- Allocate for 3 monitors
- Plasma mounting available
- Removable lower panel
- Cable entry from raised floor
- Optimize Floor space





**Headquarters Singapore :**  
**Closed-loop Technology Pte Ltd**  
No.10 Admiralty Street #01-63  
Northlink Building  
Singapore757695

Tel : +65 68537820  
sales@closed-loop.biz



Content subject to change without notice.