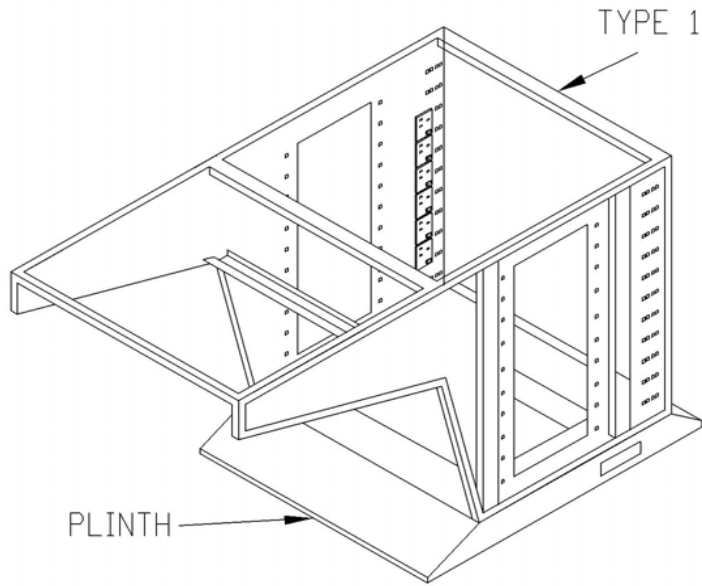




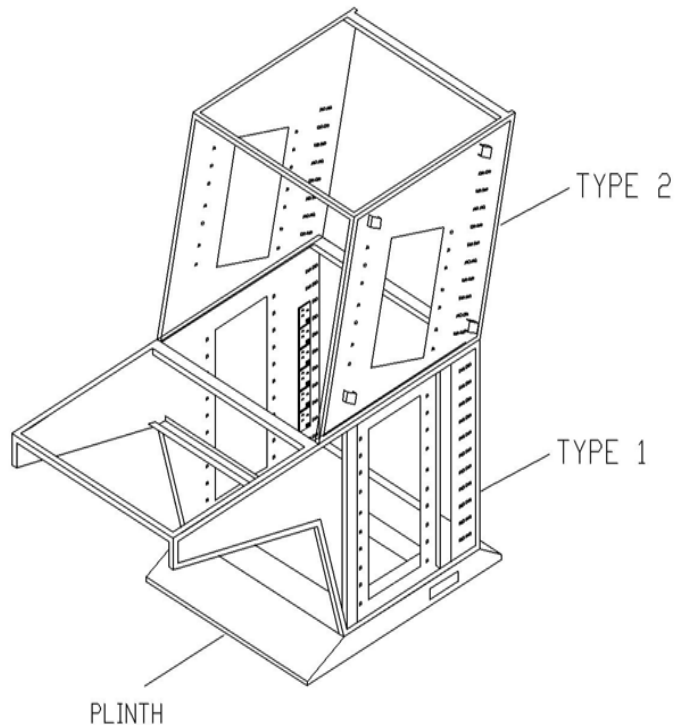
Console Module Assembly Procedure

Step 1 - Type1 Assembly



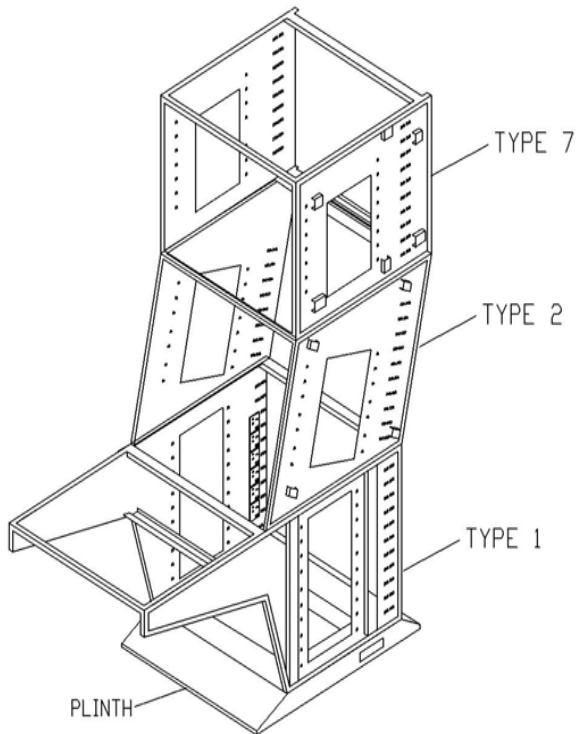
- Place Type 1 on top of the Plinth as shown
- Use M6x10 screw to tighten it
- Repeat procedure above for assemble the rest of the bay
- Total quantity of Bay can up to 20 bar and depend to quotation

Step 2 - Type2 Assembly



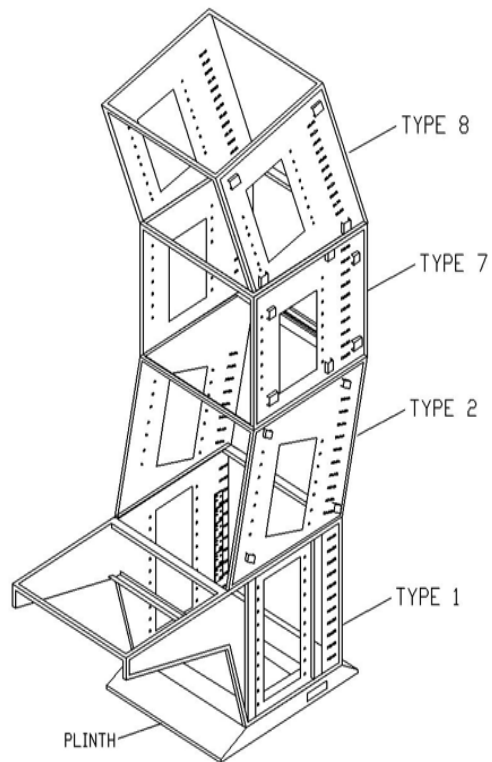
- Place Type2 on top of the Type1 as shown
- Use M6x10 screw to tighten it

Step 3 - Type3 Assembly



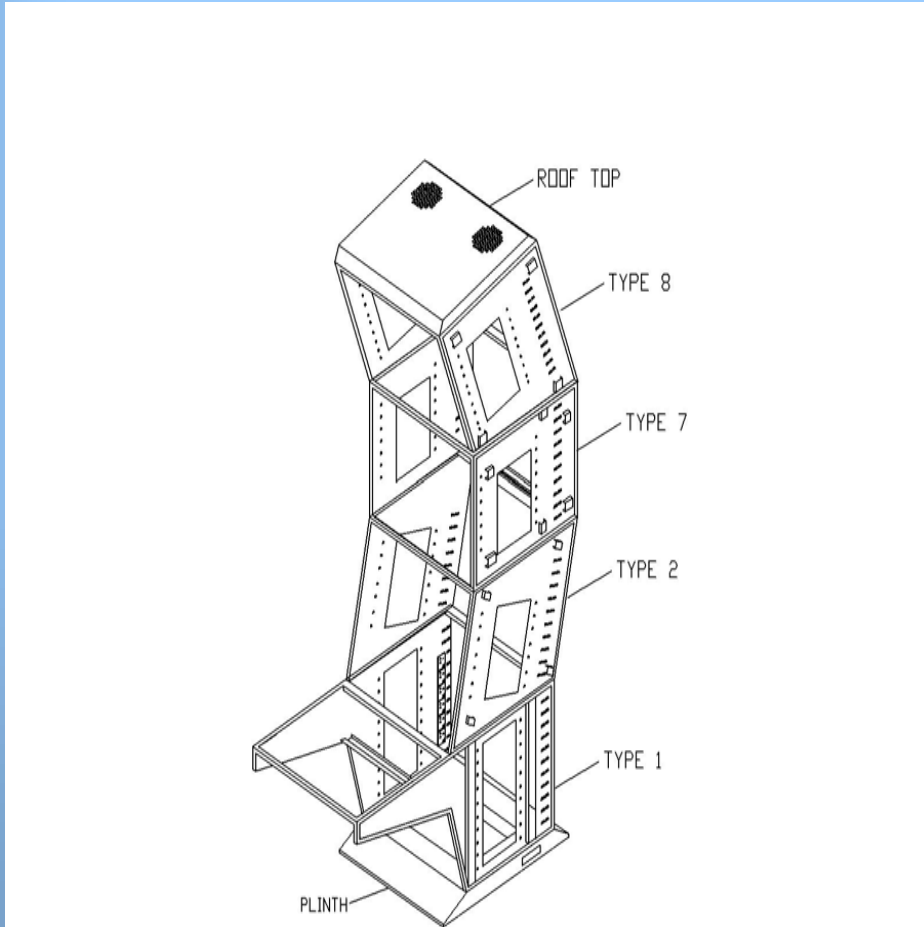
- Place Type3 on top of the Type2 as shown
- Use M6x10 screw to tighten it

Step 4 - Type8 Assembly



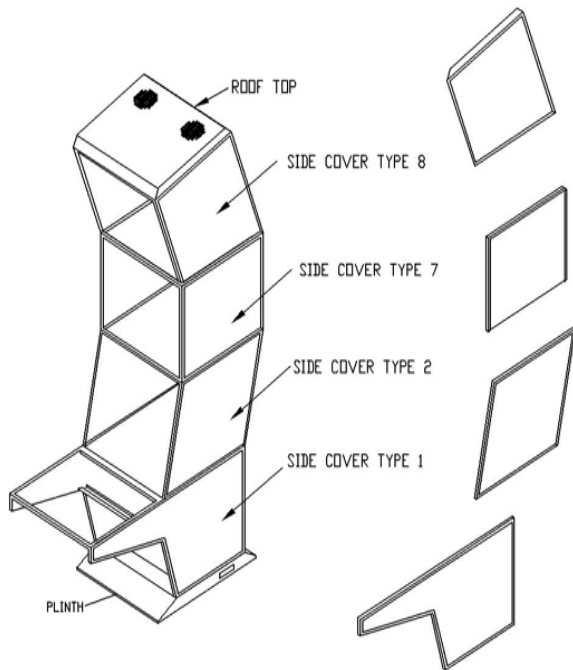
- Place Type8 on top of the Type7 as shown
- Use M6x10 screw to tighten it

Step 5 - Roof Top Assembly



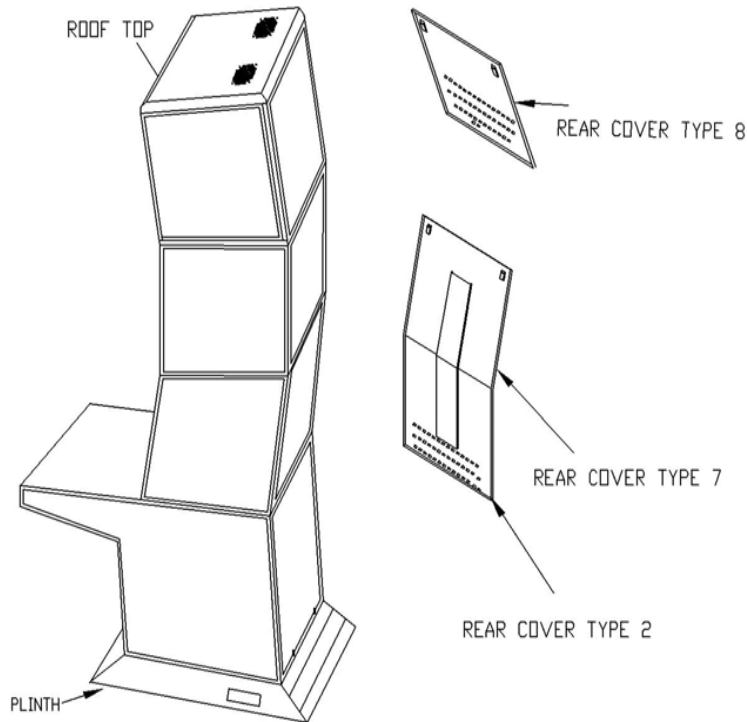
- Place Roof Top on top of the Type8 as shown
- Use M6x10 screw to tighten it

Step 6 - Side Cover Assembly



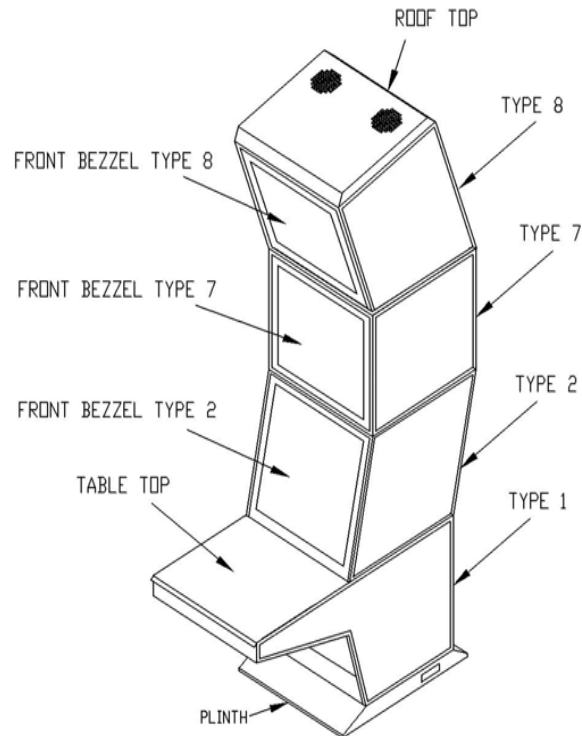
- Side Cover are placed onto console accordingly
- Use M6x35 screw to tighten it
- All screw holes are provided inside the console

Step 7 - Rear Cover Assembly



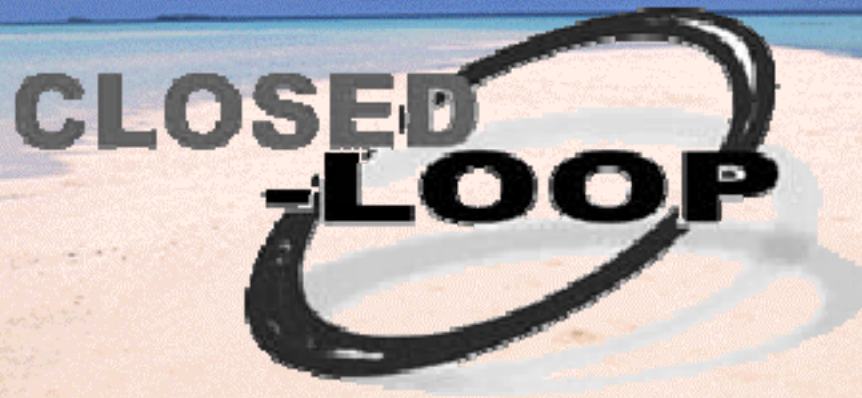
- Rear Cover place onto console accordingly
- Catches are provided on top rear side of the every type
- Use quick release catch to hold the Rear Cover

Step 8 - Front Bezel & Table Top



- Place Front Bezel onto console accordingly
- Hinges are provided for fixing and stabilizing the front bezel
- Tighten it with using M6x10 screw
- Place table top on type1 as shown
- Tighten it with using M6x16 screw

End Of Presentation



Thank you for choosing Closed-loop Products